



CREARE | LAMPS CATALOGUE



CREARE | LAMPS CATALOGUE

MARIA FITER



TABLE OF CONTENTS

SENSI	7
MORPHE	20
MIZUKO	32
GLOWING PLANETS	46
CLASSICA	70
SCONCES	73
FEATURED	90

SENSI

"Sensi" is the name of a new series of paper mâché lamps that derives from the words "senses", "sensitivity". The lamps are inspired by sensuality and mystery of the human body. Soft lines, pastel hues and seductive texture create an intriguing form. Their smooth and oval surface is accentuated by irregular recesses and unique wrinkles.

Each lamp is an example of exquisite design. It's a synthesis of sculpture and artistry - it's a piece of art. Sensi lamps add character to any space and fill the interior with warm light, setting a very special mood. No two lamps are the same and each piece tells a story.

"Sensi" lamps are very lightweight and durable. They are available in several colors obtained from natural pigments. The materials used in their production are paper obtained from recycling of old newspapers and ecological, certified, water-based glue. All these components, as well as the process of lamp formation, are environmentally friendly and ecological. Lamps are compostable.





SENSI I
37 cm height
49 cm diameter
€700.00





SENSI II
49 cm height
57 cm diameter
€650.00





SENSI II

49 cm height
57 cm diameter

€650.00





SENSI III

33 cm height
45 cm diameter

€500.00



SENSI III
 33 cm height
 45 cm diameter
€500.00

SENSI

COLOR SWATCHES



Siena Natural



Grey Natural



Red Ocher



English Pink



Green Umber



Black Umber

SENSI I



SENSI II



SENSI III



MORPHE

The term, derived from Greek, means “shape”. The form of lamps have many connotations with the zoomorphic and amorphous shapes like eggs, amoebas, oblong stones riddled by sea waves. Their smooth and oval surface is accentuated by irregular recesses, unique wrinkles in each of the lamps. Morphe lamps are very lightweight and durable. Except for the practical function, it can be an essential element of any interior decor.

Lamps are available in several colours obtained from natural pigments. The material used in their production: paper, was obtained from recycling of old newspapers and ecological, certified water based glue. All these components, as well as the process of lamp formation, are environmentally friendly and ecological. Lamps are compostable.

Featured in Archiproducts, Design Alive, Design Curial, Label Magazine, Design Wanted.



MORPHE I

20 cm height
33 cm diameter

€260.00



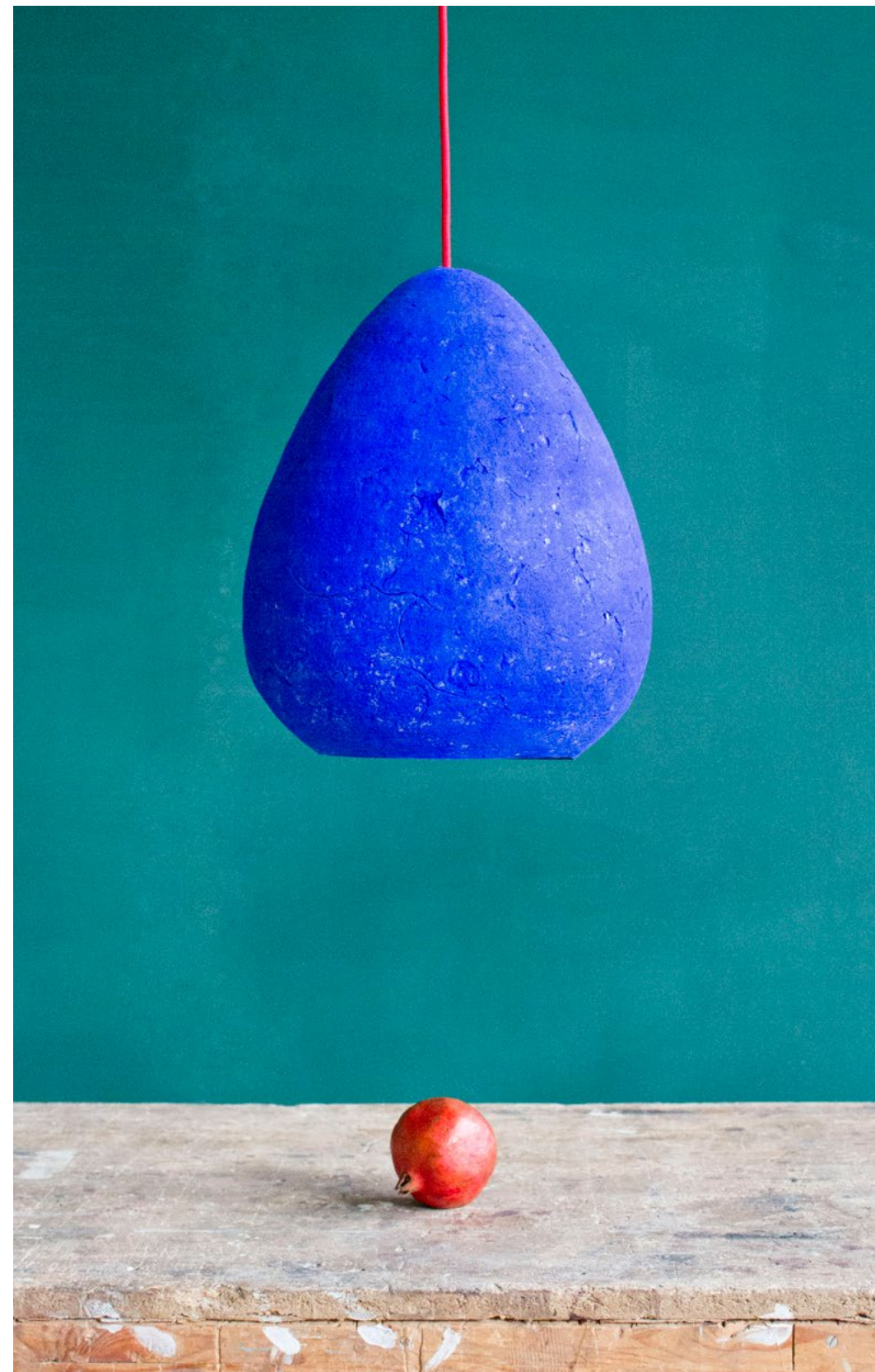


MORPHE II
30 cm height
33.5 cm diameter
€285.00



MORPHE III

40 cm height
33.5 cm diameter
€310.00





MORPHE MINI

16 cm height

16.5 cm diameter

€125.00



MORPHE

COLOR SWATCHES



Golden Ocher



Siena Natural



Red Ocher



Dark English Pink



Natural Grey



Green Nicosia



Green Veronese



Green Vagone



Ultramarine Bright



Ultramarine Dark

MORPHE I



MORPHE II



MORPHE III



MIZUKO

Mizuko is a name of a series of lamps made from papier mâché. Mizuko in Japan means “daughter of water”. The minimalist shape and light weight of the lamp recalls the association with a drop of water, which gently and slowly slides from a leaf and falls again into the water.

Mizuko lamps are ecologic, they are made from old newspapers. You can choose its color between dozens of available colors and match it with your own interior. Supplied with 1m of textile cable and with a cable cup also made from paper mache. Handmade in Spain.



MIZUKO DESK LAMP

Lampshade: 16 cm height / 30 cm diameter
Wooden base: 53 cm height / 55 cm wide

€160.00



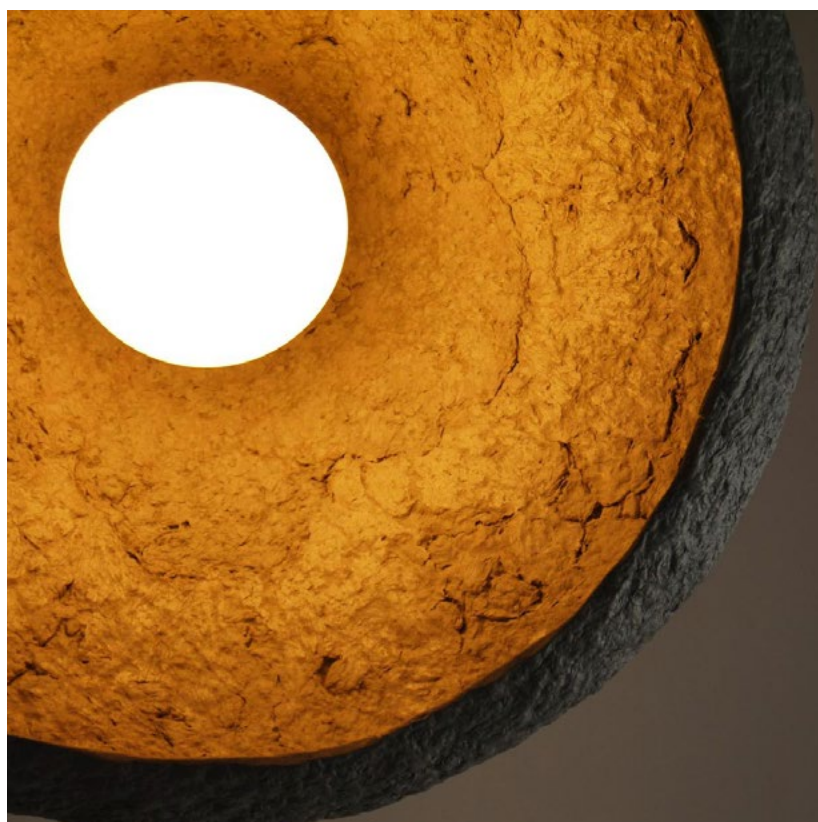


MIZUKO I
29 cm height
36 cm diameter
€195.00



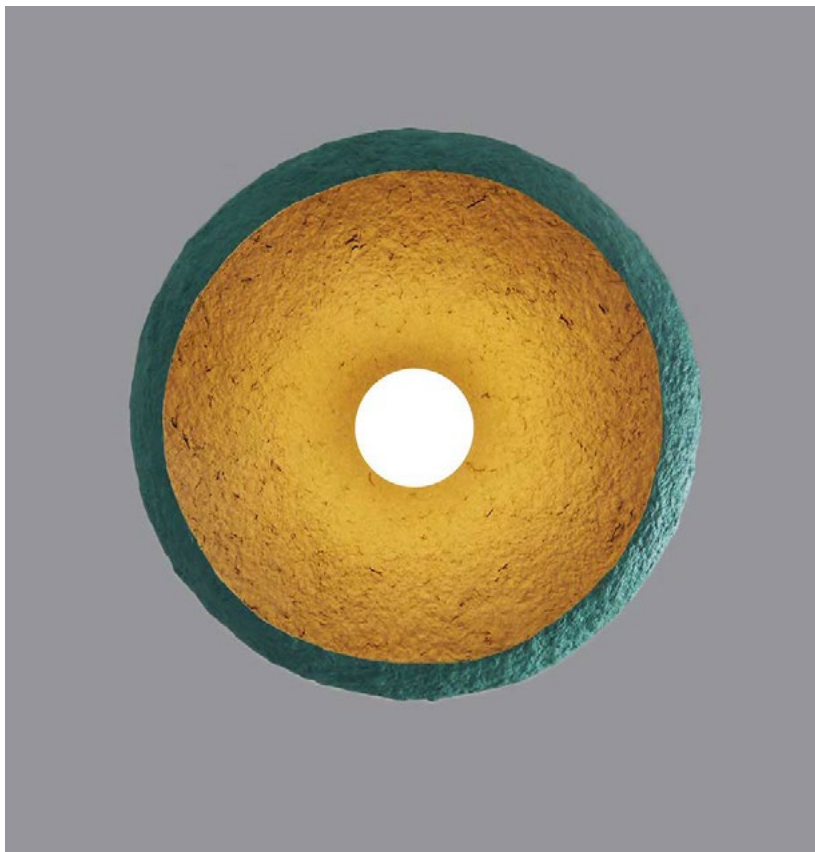


MIZUKO II
 27 cm height
 47 cm diameter
 €200.00



MIZUKO III

20 cm height
54 cm diameter
€210.00





MIZUKO WALL SCONCE

26 cm distance from wall to the "pick" of lampshade
52 cm diameter

€250.00

MIZUKO



MIZUKO DESK LAMP



MIZUKO WALL SCONCE



MIZUKO II



MIZUKO I



MIZUKO II

GLOWING PLANETS

The form of the Copernicus series of paper pulp lamps refers to the shape of planets: Pluto, Jupiter, Globe, Luna. Its "nucleus", the source of light, brings it to life. When enabled, we'll see a glowing and full of light planet. Its porous, irregular structure was inspired by the paintings of Polish Grupa Nowohucka. The material used for its creation - paper - is being destroyed, broken into tiny pieces, which, in hot temperature again links into a new, completely different entity. "Paper" can be later shaped in many ways and in its final form brings an association with nature, its source. Lamps are 100 % recycled and eco-friendly, made from old newspapers.

Supplied with 1m of textile cable with a cable canopy made from papier mâché as well. Lamps are available in various colours.

Featured in Vogue UK, Elle Decoration, Kitchen Bedrooms and Bathrooms Magazine, Archiproducts, Darc Magazine, Usta, Design Alive.



JUPITER

50 cm height
56 cm diameter
€320.00





GLOBE

36 cm height

41 cm diameter

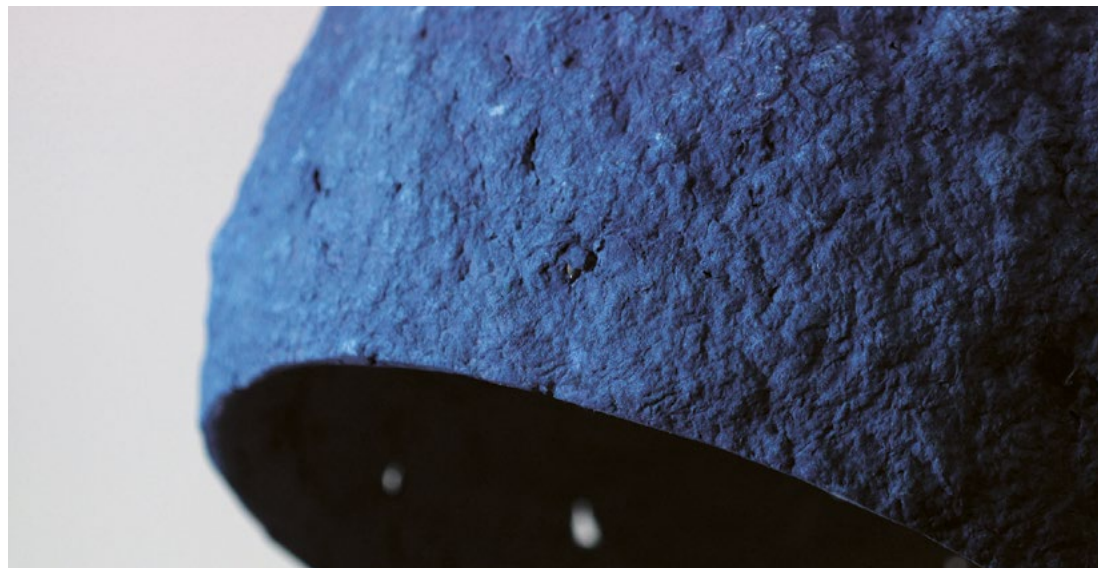
€210.00



PLUTO

36 cm height
41 cm diameter

€210.00





LUNA

50 cm height
56 cm diameter
€320.00





GLOBE RUSTIC

36 cm height

41 cm diameter

€210.00



GLOBE TURQUOISE

36 cm height

41 cm diameter

€210.00

GLOBE MEDIUM

32 cm height

34 cm wide

€175.00





GLOBE MINI

24 cm height

26 cm wide

€125.00



GLOBE NANO

20 cm height

22 cm wide

€110.00



GLOWING PLANETS



GLOBE



JUPITER



GLOBE RUSTIC



PLUTO



LUNA



GLOBE TURQUOISE

CLASSICA

Pendant lamp "Classica" available in Red Ocher colour obtained from natural pigments. Handcrafted from paper waste and ecological, water based glue. All these components, as well as the process of lamp formation, are environmentally friendly and ecological. The Classica lamp is very lightweight and durable.





CLASSICA

20 cm height

29 cm wide

€200.00

ORGANIC SCONCE

Organic wall sconce lamps are made out of paper mache. Lamps seem to be levitating on the wall thanks to a hidden wooden structure that is attached to the wall. Its sculptural form embellishes the space during the day because of its vivid combination of colours. At night when the lamp is ON the light is accentuating its organic shape and fills the space with a delicate, non disturbing light ideal for relaxation.

The lamp is available in 2 options: with a 2cm cable with a plug and hardwired.

Organic sconce lamps are handcrafted from paper pulp obtained from recycling of old newspapers and cellulosic, water based glue. They are available in a wide range of colours obtained from natural, earthy pigments. All these components, as well as the process of lamp formation, are environmentally friendly and ecological.



**GREEN
VERONESE**

50 cm height
49 cm wide

€300.00



SIENA NATURAL

50 cm height
49 cm wide

€300.00



DARK GREY

50 cm height
49 cm wide

€300.00

ALUBIA

The name of this wall lamp comes from Spanish and it means a Bean. When the lamp is ON the light gently reflects on the wall and illuminates the space without disturbing eyes.

This lamp is handcrafted entirely from paper pulp waste, water based glue and wooden wall structure. Therefore it's 100 % recycled and eco-friendly. The Alubia lamp is available in several colours obtained from natural pigments. Kit includes a lightbulb with a G9 ending. Use LED bulbs up to 10W only.

There is a wooden structure that attaches the lampshade to the wall. The lamp can be hardwired or with a cable (2m) and a plug. I enclose adapters for the UK,US and AU.

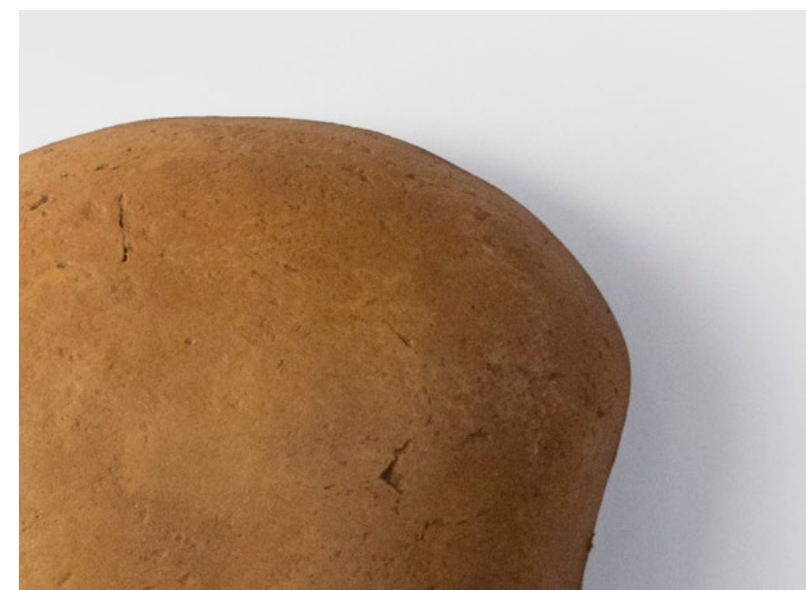




ALUBIA

35 cm height
31 cm wide
9 cm depth

€200.00



CLOVER

This wall lamp belongs to the collection of lamp shades that are inspired by the shapes existing in nature.

This wall lamp resembles a Clover.

When the lamp is ON the light gently reflects on the wall and illuminates the space without disturbing eyes.

This lamp is handcrafted entirely from paper pulp waste, water based glue and wooden wall structure. Therefore it's 100 % recycled and eco-friendly. The Clover lamp is available in several colours obtained from natural pigments. Kit includes a lightbulb with a G9 ending. Use LED bulbs up to 10W only.

There is a wooden structure that attaches the lampshade to the wall. The lamp can be hardwired or with a cable (2m) and a plug. I enclose adapters for the UK,US and AU.





CLOVER

34 cm height

32 cm wide

9 cm depth

€200.00



DAISY

This wall lamp belongs to the collection of lampshades that are inspired by the shapes existing in nature. The shape of Daisy was a source of inspiration for me to create this wall sconce.

When the lamp is ON the light gently reflects on the wall and illuminates the space without disturbing eyes.

This lamp is handcrafted entirely from paper pulp waste, water based glue and wooden wall structure. Therefore it's 100 % recycled and eco-friendly. The Daisy lamp is available in several colours obtained from natural pigments. Kit includes a lightbulb with a G9 ending. Use LED bulbs up to 10W only.

There is a wooden structure that attaches the lampshade to the wall. The lamp can be hardwired or with a cable (2m) and a plug. I enclose adapters for the UK,US and AU.





DAISY

33 cm height

33 cm wide

9 cm depth

€200.00

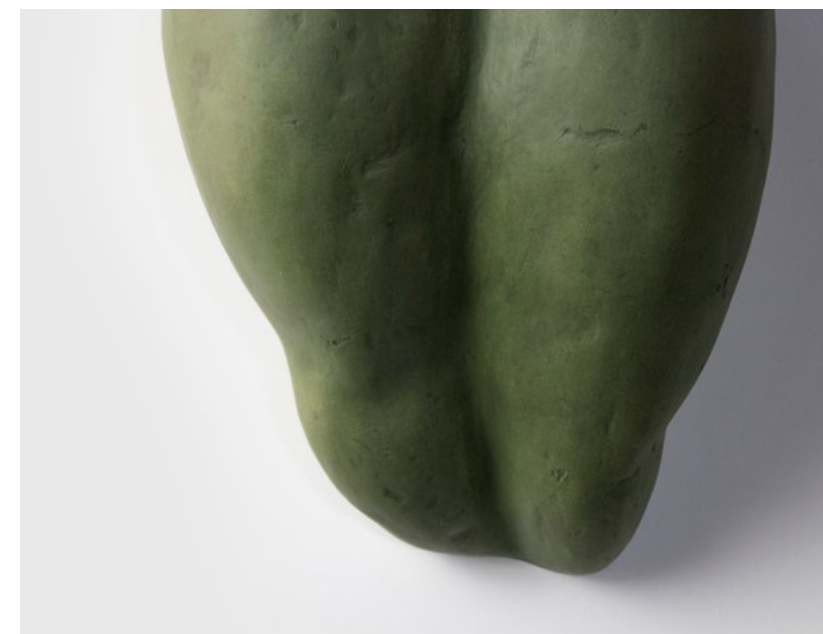
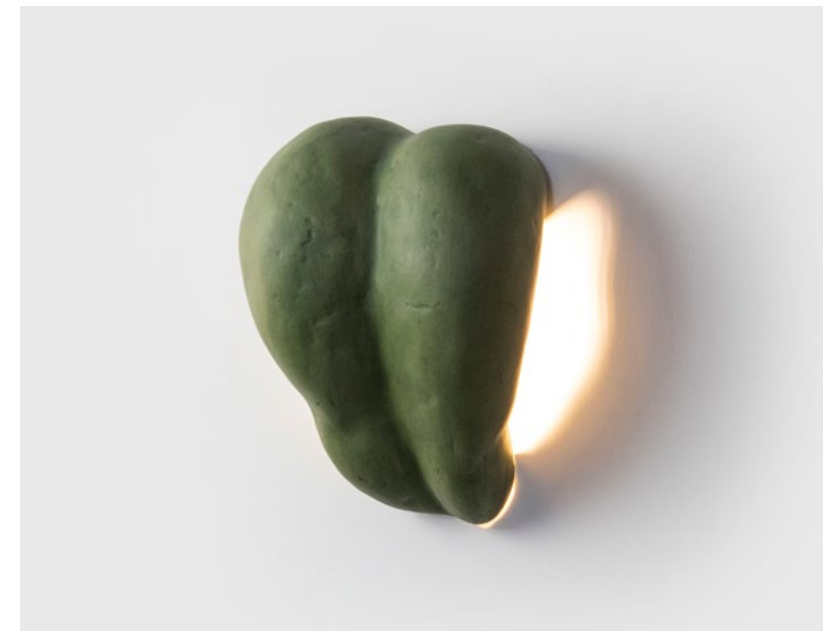
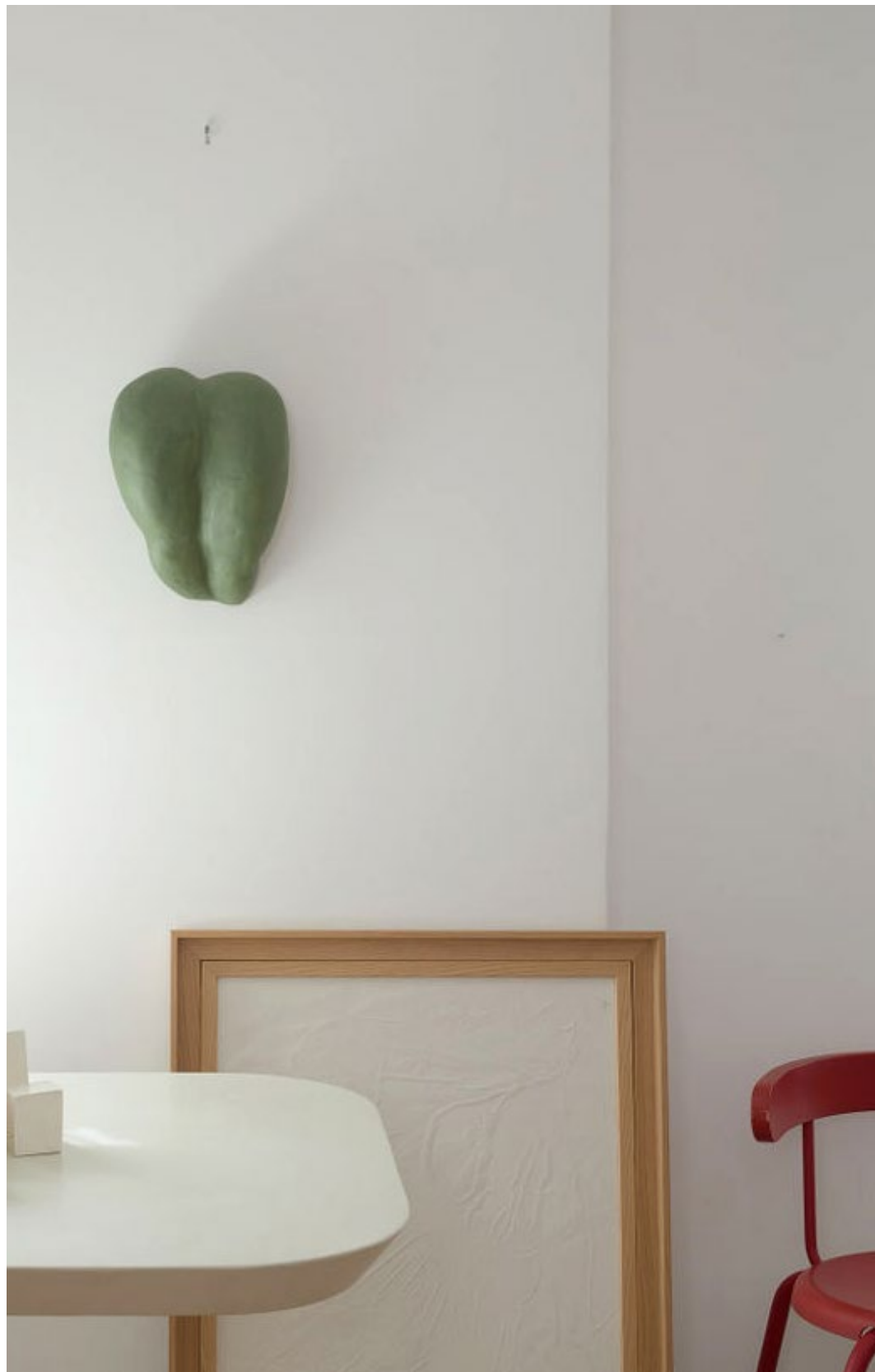
LUZ TENUE

The name of this wall sconce lamp comes from Spanish and means "Soft light". Its form is inspired by the shapes of the human body. This lamp gives very little light. It can be used in the bedroom in the moment when we do not need a lot of light.

This lamp is handcrafted entirely from paper pulp waste, water based glue and wooden wall structure. Therefore it's 100 % recycled and eco-friendly. The Luz Tenue lamp is available in several colours obtained from natural pigments.

Kit includes a lightbulb with a G9 ending. Use only LED bulbs up to 10W.





LUZ TENUE

34 cm height
24 cm wide
16 cm depth
€350.00

— FEATURED

GLOBE RUSTIC LAMP

Photo session of FRØPT

thoughtfully designed fronts for IKEA kitchen, bathroom and closet cabinets.

Photography Pion Studio Fotografia

Styling Magda Milejska

CREARE

FEATURED





— FEATURED

MORPHE III LAMP

Photo session of FrØpt
thoughtfully designed fronts for Ikea kitchen, bathroom and closet cabinets.
Photography Pion Studio Fotografia
Styling Magda Milejska



— FEATURED

CALYX LAMP

Photo session of Frøpt

thoughtfully designed fronts for Ikea kitchen, bathroom and closet cabinets.

Photography Pion Studio Fotografia

Styling Magda Milejska



— FEATURED

GLOBE LAMP

Elle Decoration UK Issue April 2019

Article "Paper & Ink"

Styling Alex Kristal/Made Good

Photography Jake Curtis

Production Flora Bathurst/Made Good



— FEATURED

SENSI LAMP

Architectural Digest China Issue March 2020

Article "Love Yourself"

Styling Roshi Kamdar

Photography Wang Wei

CREARE

FEATURED



伦敦 in London

对页 这座公寓位于伦敦小威尼斯区，Roshi Kamdar在此打造出了一个结合艺术、设计、手工美学的空间。餐桌上的吊灯来自波兰设计师 Maria Flier，以纸浆制成的不规则形态与餐桌造型相呼应。桌上看起来像面包的“摆件”是艺术家 Simon Ings 的石雕作品。

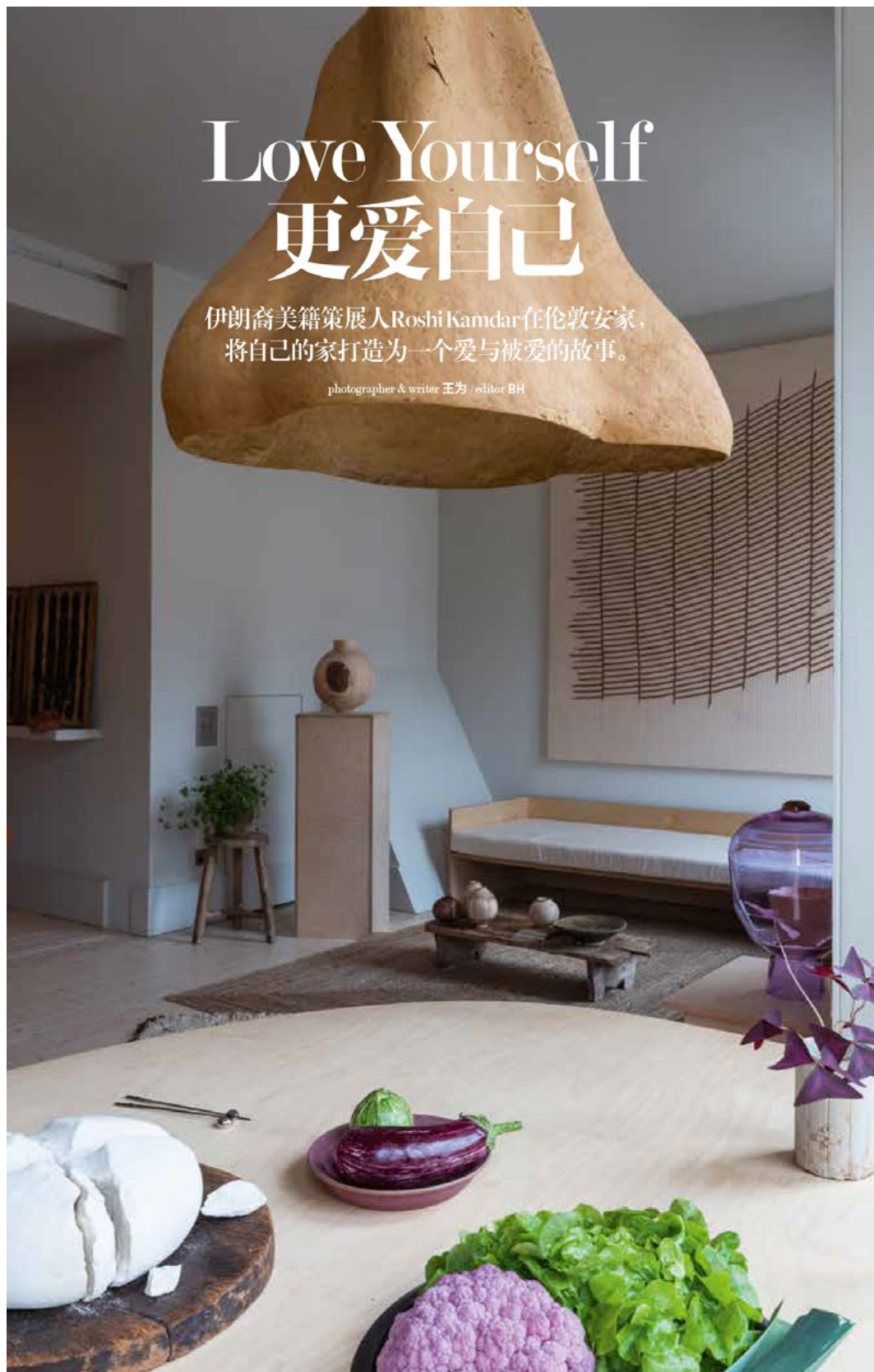
本页 餐桌是来自东伦敦的家具设计师 Fred Rigby 的作品。Roshi 想要一个可容纳10个朋友同时聚会的餐桌，Fred 便建议了这个弧线不规则的形状。同时，Roshi 还为大桌加了一个嵌入式的共享大碗，用伊朗人的方式让大家来分享美食。桌上的白瓷是陶瓷艺术家 Noe Koremoto 的作品。

主人：Roshi Kamdar 是来自伊朗，生长于美国洛杉矶，现定居英国伦敦的生活美学家，也是苏富比学院 (Sotheby's Institute of Art) 的讲师。2019 年成立 ROSHI 公司，结合自己过去商业开发、零售空间艺术和文化项目设计及房地产方面的丰富经验，以及对日本极简主义和西方当代艺术家、设计师、手工匠人的不断探索及理解，为室内设计提供整体艺术软装方案，其中包括设计师定制家具、家饰、艺术品等方案。

Love Yourself 更爱自己

伊朗裔美籍策展人Roshi Kamdar在伦敦安家，
将自己的家打造为一个爱与被爱的故事。

photographer & writer 王为 / editor BH



空间是关于人与人之间的关系，
在日常生活中创造它们与人与人之间和谐的关系，
爱与被爱，不限于狭义的语境！



— FEATURED

SENSI LAMP

Architectural Digest Germany Issue May 2022

Article "Ganz und gar nicht zahm!"

House of Kevin Parker (Tame Impala) and Sophie Lawrence Parker

Interior design Jaime Major

Photography Ye Rin Mok

CREARE

SENSI LAMP



— FEATURED

SCONCE

Vogue Living Australia Issue March/ April 2022

Article "Perfect Memory"

Interior Design Szymon Keller

Photography Marina Denisova

CREARE

SCONCE



— FEATURED

SCONCE

Architectural Digest Spain 15 September 2021

Article "La casa perfecta"

Interior Design Szymon Keller

Photography Marina Denisova

CREARE

SCONCE



— FEATURED

MORPHE MINI

Agriturismo Blum, a farmhouse in North of Italy, in Lagorai
Photography Giordano Garosio and Giulia Tibaldi

CREARE

MORPHE MINI





— FEATURED

SENSI LAMP

Architectural Digest Spain Issue April 2021

Article "Luces Vivas"

Styling Garate Hausmann

Photography La Dichosa

CREARE

SENSI LAMP



— FEATURED

GLOBE AND CALYX LAMPS

Catalogue of Chilewich

New York based textile designer

Photography courtesy of Chilewich







— FEATURED

PLUTO LAMP

Kitchen Bedrooms & Bathrooms Magazine

Article "Rough luxe"

Styling Alison Nicholls

Assisted by Celia Campbell

Photography Ian Nolan



— FEATURED

MIZUKO LAMP

Soho House Barcelona / Little Beach House Barceona
Custom made lamps for 16 hotel rooms by Soho House
Photography courtesy of Soho House

CREARE

MIZUKO LAMP



— FEATURED

GLOBE JUPITER LUNA PLUTO LAMPS

Interior design exposition in Espai-D Barcelona
Photography Davide Pellegrini

CREARE

FEATURED





— FEATURED IN

